

# LOW VOLTAGE ALARM 1901

**LOW VOLTAGE DETECTOR THAT MEETS  
THE REQUIREMENTS OF NFPA 1901**



**MODEL # : 091-85-12**

**MODEL # : 091-85-24**

File: IM\_091-85-xx\_revb.indd  
Rev: B  
Revised By: MFG  
Date: 10-29-2013

**3 YEAR WARRANTY**



scan using your mobile  
device for more information

170 Cherry Avenue  
West Sayville, NY 11796  
www.kussmaul.com

**KE KUSSMAUL™  
ELECTRONICS**  
ENERGIZED AND READY, WHEN SECONDS COUNT

Ph: 800-346-0857  
Fax: 631-567-5826  
sales@kussmaul.com

# INTRODUCTION

---

NFPA 1901, Standard for Automotive Fire Apparatus, 1996 Edition, paragraph 9.3.3 requires a low voltage alarm to detect whenever the battery voltage of a vehicle drops below a threshold for a 2 minute interval. The Model 091-85-XX, Low Voltage Alarm/1901 is a voltage sensing device which is designed to fulfill the requirements of referenced NFPA 1901 Standard.

## OPERATION AND INSTALLATION

---

### I. OPERATION OF THE LOW VOLTAGE ALARM 1901

The Model 091-85-XX contains voltage sensing circuits, a 2 minute timer, an output relay as well as RED and GREEN colored LEDs to indicate status.

In operation the Model 091-85-XX continually monitors a system voltage present at J1-1 (+ VDC) with respect to J1-2 ( VDC Return). When the system voltage is equal to or greater than the following “Low Voltage Thresholds” the GREEN LED is illuminated indicating a normal system voltage.

<u>Model Type</u>	<u>Nominal System Voltage</u>	<u>Low Voltage Threshold</u>
091-85-12	12.0VDC	11.8VDC
091-85-24	24.0VDC	23.6VDC

Whenever the monitored system voltage drops below the Model Type “Low Voltage Threshold” a timer internal to the Model 091-85-XX is started. If the Low Voltage condition continues for more than 2 minutes the Model 091-85-XX output RELAY is energized, the GREEN LED will extinguish and the RED LED will illuminate. The output RELAY will remain energized (COM makes NO) until the sensed system voltage rises above;

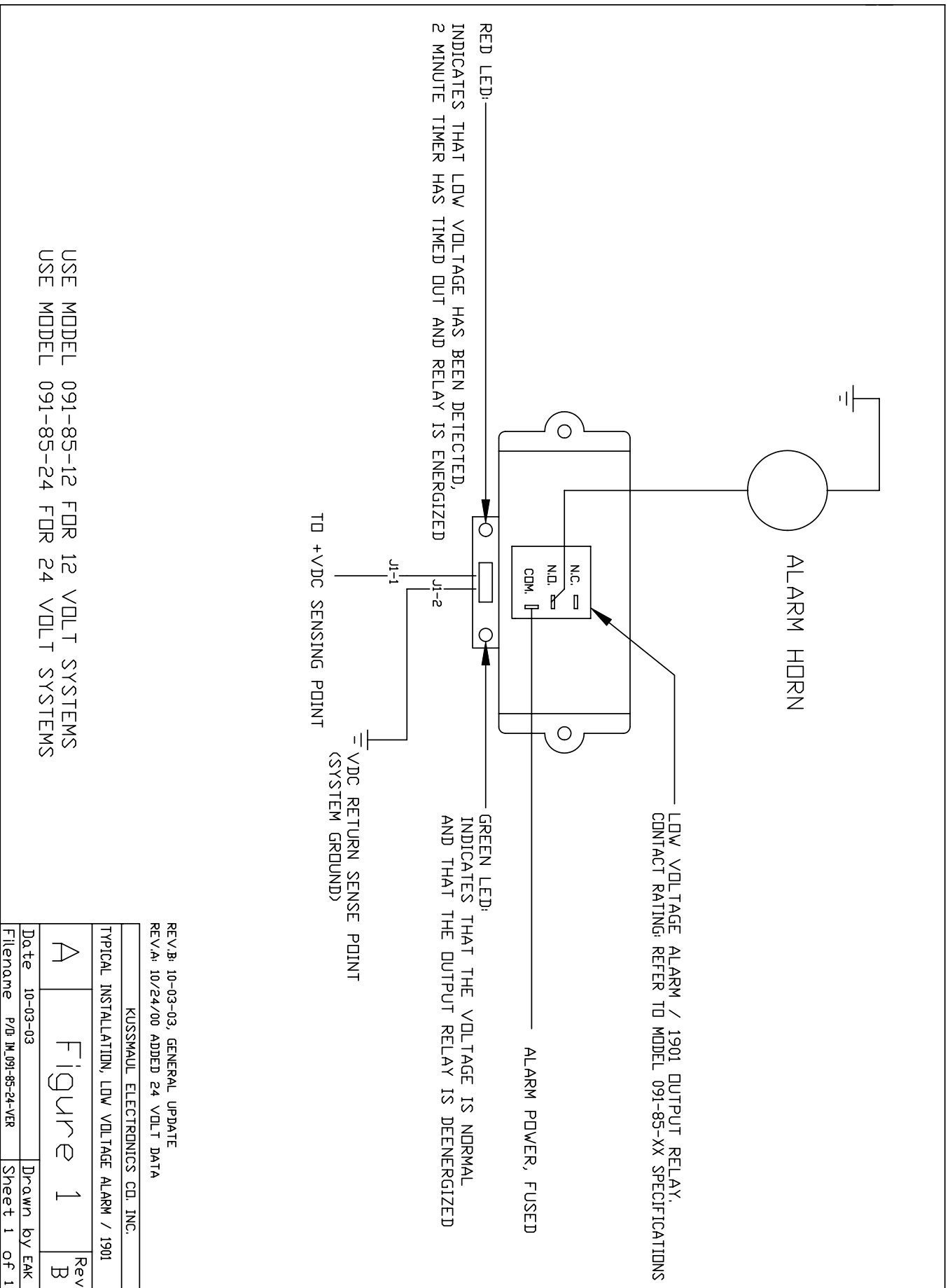
12.8VDC for Model 091-85-12

25.6VDC for Model 091-85-24

The output relay has both normally open (NO) and normally closed (NC) contacts available providing the installer with complete flexibility in wiring the alarm circuit. Any external alarm indicator or alarm horn must be provided by the installer consistent with the output relay contact ratings provided in Model specifications. The Model 091-85-XX is NOT waterproof so it is suggested that it be mounted in a suitable location. Care should be taken to wire the +VDC **AND** VDC Return sense lines to an electrical point representative of system voltage monitoring requirements so that an accurate indication of system voltage may be obtained. Fuse +VDC sense line as required using ONLY an ultra low resistance/voltage drop device.

Refer to Figure 1 for illustration of a typical wiring configuration and output relay contact rating(s).

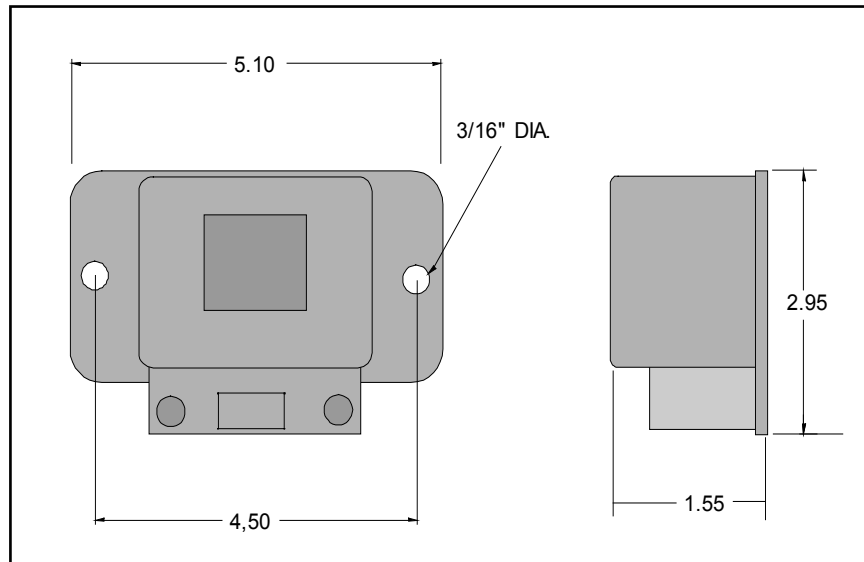
## II. FIGURE 1, WIRING DIAGRAM



# SPECIFICATIONS

Model Number	Temperature Environment (deg C)	Input Power (Vdc)	Input Current (ma)	Output Relay "NO"	Output Relay "NC"	Alarm Threshold (Vdc)	Voltage Threshold (Vdc)	Alarm Duration (Minutes)	Weight (lbs)
091-85-12	0 to 50	12	120, Relay "ON" 50, Relay "OFF"	30A 240 Vac 14 Vdc	20A 240 Vac 14 Vdc	11.8	12.8	Fixed 2, +/- .5	.5
091-85-24	0 to 50	24	75, Relay "ON" 30, Relay "OFF"	30A 240 Vac 26 Vdc	20A 240 Vac 26 Vdc	23.6	25.6	Fixed 2, +/- .5	.5

# OUTLINE DRAWING



# INSTALLATION RECORD

---

DATE INSTALLED \_\_\_\_\_

INSTALLED BY \_\_\_\_\_

VEHICLE IDENTIFICATION \_\_\_\_\_

VEHICLE OWNER \_\_\_\_\_

# WARRANTY POLICY

---

All products of Kussmaul Electronics are warranted to be free of defects of material or workmanship. Liability is limited to repairing or replacing at our factory, without charge, any material or defects which become apparent in normal use within 3 years from the date the equipment was shipped. Equipment is to be returned, shipping charges prepaid and will be returned, after repair, shipping charges paid.

Kussmaul Electronics shall have no liability for damages of any kind to associated equipment arising from the installation and/or use of the Kussmaul Electronics products. The purchaser, by the acceptance of the equipment, assumes all liability for any damages which may result from its installation, use or misuse, by the purchaser, his or its employees or others.



Members of  
Fire and Emergency  
Manufacturers and  
Service Association



Members of  
National Fire  
Protection  
Association



Members of  
Fire Apparatus  
Manufacturers  
Association



---

170 Cherry Avenue  
West Sayville, NY 11796  
www.kussmaul.com



Ph: 800-346-0857  
Fax: 631-567-5826  
sales@kussmaul.com