

# SUPER 16 AUTO EJECT

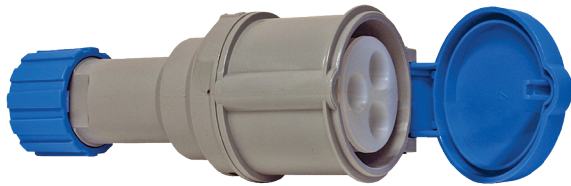
## EUROPEAN STYLE AUTOMATIC EJECTION UNIT

### Features

- 16A, heavy duty pin and sleeve contacts provide reliable connection over years of insertion/eject cycles
- 3 pin, 240V configuration
- IEC 60309 standard European connector provided
- Smooth sculpted cover, no sharp edges
- Upon sensing engine start, plug ejects from receptacle and away from vehicle path; eliminating dangerous severing of cord
- Auto Eject energizing is delayed until detector pin senses plug is inserted, eliminating terminal arcing
- After eject, magnetized weatherproof cover snaps into position over inlet
- Weatherproof back enclosure with watertight cable fittings protects mechanism from road contamination



System includes: Auto-Eject, Cover and Plug



16A, 240V Plug  
Model #: 091-182-CON-3P-230

### Optional Accessory

**EZ Mounting Plate with Power Indicator:**  
Assemble and pre-wire Auto-Eject in this stainless steel plate, then mount to vehicle wall. Watertight green indicator light confirms vehicle is energized

Model # 091-182-027-120, 120 Vac

Model # 091-182-027-240, 240 Vac



Weatherproof  
Cover Color Options

<b>YW</b> Yellow	<b>WH</b> White
<b>RD</b> Red	<b>GY</b> Gray
<b>BL</b> Blue	<b>BLK</b> Black

Part Number	Description	Electrical Data				Dimensions			Wgt.
		DC Volts	DC Amps	AC Volts	AC Amps	H	W	D	
091-182-230-12	Super 16 Auto Eject, 12 Volt	12	N/A	240	16	5.60"	4.40"	5.60"	5
091-182-230-24	Super 16 Auto Eject, 24 Volt	24	N/A	240	16	5.60"	4.40"	5.60"	5